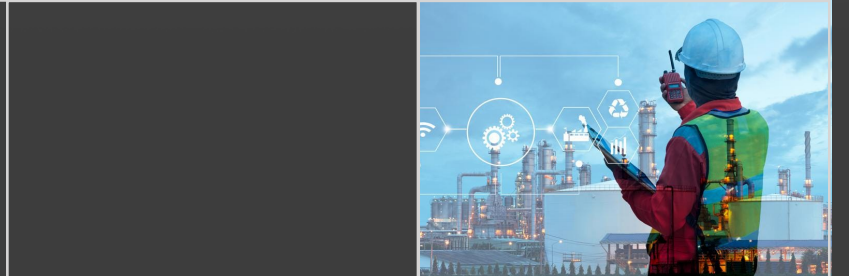
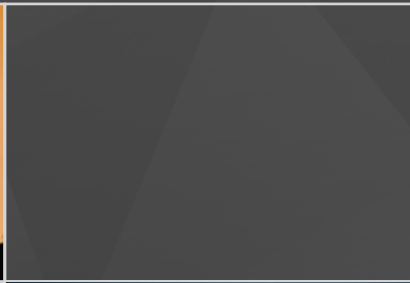
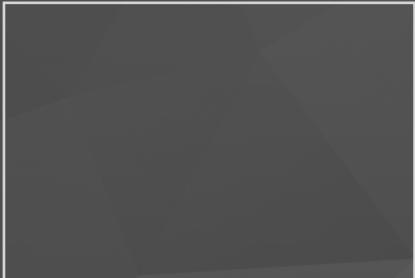




DousTech

Company Profile

2023





ABOUT US

DousTech Trading is a specialized industrial product distributor founded in the United Arab Emirates in 2018. Through careful agent selection over the years, we have extended our business to cater to a broader audience, and we now specialize in four industrial areas: electrical, tires, medical, and low-current systems.

We are the distributor of prominent manufacturers of supply monitoring systems and provide manufacturing services in addition to being a technical distributor. This enables us to offer value-added services such as cable termination, final assembly, and electronic device testing.

DousTech Trading was founded to support and expand our business throughout the Middle East and Africa. We are the preferred technical supplier in the region, authorized to sell industrial electrical components, and the preferred supplier for contractors.

Our product line is divided into seven categories:

1. Electrical
2. Low-voltage and medium-voltage cables
3. Lightings
4. Professional Tools for Electrical and Industrial Applications Tools
5. Tiers
6. Low Current Systems
7. Medical Equipment

DousTech Trading is committed to delivering high-quality goods and services to our customers. Our skilled team works closely with clients to address their specific requirements, and we continuously strive to develop innovative solutions that enhance efficiency and production.



WHO WE ARE?

DousTech Trading is a provider of high-performance engineering technologies and smart electrical and mechanical systems and solutions. We specialize in building, connecting, powering, and protecting valuable assets and critical infrastructures.

Our team offers full-line solutions and technical intelligence that create reliable, resilient systems that can sustain and grow your business and community. With our supply chain management expertise and technical know-how, we drive efficiency and effectiveness to benefit your bottom line, not just today, but also tomorrow and beyond.

We are committed to providing innovative solutions for buildings, commercial sites, global industries, and critical infrastructure from concept to realization. Our services include supply, installation, maintenance, repair, and modernization.

As a responsible business, we promote ethical practices at every level of the company and expect the same from our employees and partners. We conduct business with honesty and in accordance with the law and our Global Business Ethics and Conduct Policy.

Our ultimate goal is to create reliable, resilient engineering solutions that drive efficiency and effectiveness to benefit our customers for their personal and professional needs. At DousTech Trading, we believe that our success is measured by the success of our customers.

OUR COMPETENCIES

At DousTech Trading, our competencies are what set us apart from the competition. Our success in delivering integrated engineering design solutions that fully comply with our client's project needs and specifications is based on the following:

1. Understanding our client's needs: We take a rigorous approach at the outset of each project to fully understand our client's requirements and constraints, as well as any variables that could impact the project's success. This enables us to deliver solutions that are tailored to our client's needs.
2. Value Engineering: We foster a culture that encourages value engineering in all decisions during the planning, design, documentation, and construction phases. This approach ensures that we deliver cost-effective solutions that meet our clients' needs.
3. Commitment to Quality, Safety, and Reliability: Our company values of commitment, quality, safety, reliability, trust, and integrity are at the heart of everything we do. We encourage our people to work ethically, and we strive to continuously improve our processes to deliver the best possible solutions to our clients.



OUR VISION

At DousTech Trading, we believe that success is achieved through collective gains and achievements. Our company culture is built on this foundation, enabling us to help our employees reach their full potential, provide our customers with high-quality solutions, offer mutual benefits to our suppliers, and contribute to the development of our society while preserving the environment.

We measure our competency by the satisfaction of our customers, who constantly seek us out for our reliable solutions. Our vision is to:

1. Be the preferred and most trusted company in the region, supplying high-performance, latest technology solutions, and services for multi-sector investment projects.
2. Be our customers' partner of choice, offering the latest world-class technology solutions and services from our highly talented workforce, and delivering "quality products through quality services."
3. Foster deep partnerships with our key suppliers to ensure that both parties understand and can respond to our strict process and product requirements.

OUR PRODUCTS | ELECTRICAL





ELECTRICAL & ELECTRONICS

- Terminal Blocks
- Block Contactors
- Overloads
- Manual Motor Starters (MMS)
- Modular Devices / Command Devices Contactors
- Latching Relays
- Soft Starters
- Pilote devices
- Limit switches
- Helita Lightning Protection System
- Surge Protection Devices (OVR)
- Industrial Plugs & Sockets
- Switches
- Isolators



BLOCK CONTACTORS

Description

"AF" Range Contactors (AC/DC) Application AF09–AF2650 contactors are used for controlling power circuits up to 690 VAC and 220 VDC. They are mainly used for controlling 3-phase motors, non-inductive or slightly inductive loads.

AF09... AF2650 contactors include an electronic coil interface accepting a wide control voltage U_c min... U_c max. Only four coils cover control voltages between 24...500 VAC 50/60 Hz or 20...500 VDC

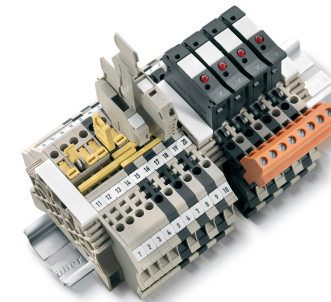
AF contactors have built-in surge protection and do not require additional surge suppressors.
 AF09-AF2650 3 Pole Contactors. Operational Current: (AC-1) 25-2650A.
 Operational Current: (AC-3) 9-1060A. Power Rating: (AC-3) 4-560KW. AF09-EK1000 4 Pole Contactors. Trip Amp: (AC-1) 25-1000A.



TERMINAL BLOCKS

Description

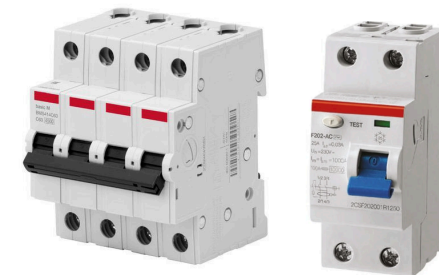
These are modular, insulated blocks used to connect electrical wires and circuits. They can be easily customized and rearranged as needed, making them ideal for use in complex electrical systems.



OVERLOADS

Description

Overload relays are used for protection motors in the event of overload or phase failure. Manual or automatic reset is selectable. Phase loss sensitive. TEST and STOP function. Suitable for three and single-phase applications. TF42, TF65, TF96, TA140DU and TA200DU ranges
 Setting range: 0.1-200A.



Long Life



Reliable Operation



2 Years Warranty



Temperature resistance

CIRCUIT BREAKERS

- Air Circuit Breakers (ACB)
- Molded Case Circuit Breakers (MCCB)
- Miniature Circuit Breakers (MCB)
- Residual Current Devices (RCD)
- RCBO (Residual current circuit breaker with overcurrent protection)



AIR CIRCUIT BREAKERS (ACB)

Description

EMAX-2 Air circuit breakers can be used both as circuit breakers for general protection (of plants, user complexes, or electric lines) and as protection circuit breakers of electrical machines (generators, motors, transformers, capacitors). Trip Amp: 250-6300A. Short Circuit Current: 42-200KA



MOLDED CASE CIRCUIT BREAKERS (MCCB)

Description

The Molded-Case Circuit-Breakers are used in industrial and civil low-voltage plants with service currents from 1 to 3200 A. They are used in direct and alternating current distribution switchgear, for motor protection (Motor Control Center), generators, and capacitors, and for end users

Tmax

Trip Amp: 1-3200A. Short Circuit Current: 16-200KA.
No. of Poles: 1, 3, 4.

XTmax

Trip Amp: 1-250A. Short Circuit Current: 18-150KA.
No. of Poles: 3, 4.



Long Life



Reliable Operation



2 Years Warranty



Temperature resistance

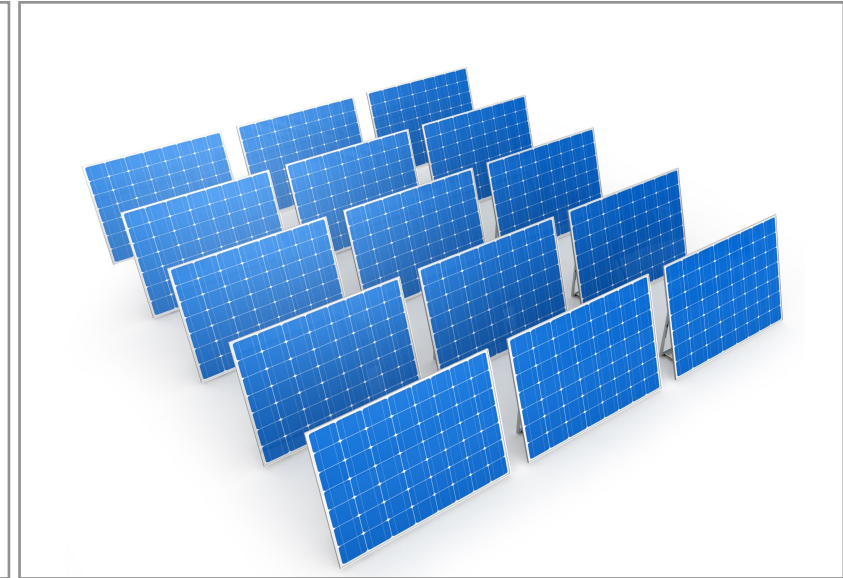
SOLAR POWER

- Solar Panels
- Solar Inverters
- Solar Batteries
- Solar Charge Controllers
- Solar Mounting Systems

SOLAR PANELS

Features and Benefits

- Renewable energy
- Reduce electricity bills
- Low maintenance costs
- Quiet operation
- Lower pollution risks
- Easy Installation
- Engineered for all weather operations



SOLAR INVERTERS

Features and Benefits

- Inbuilt MPPT charge controller
- Efficiency rating enclosure to 97.8%
- Available with Graphical display with detachable control unit
- Can work efficiently from -25 C° to +60 C°
- Integrated performance data monitoring
- IP55 to 67 Outdoor enclouser



Instant ON



Zero UV Radiation



2 Years Warranty on Lamps



Long Life



Energy Saving



Temperature resistance

Designed to fit easily into the existing lighting system

CABLES & WIRES

- LV & MV Cables
- Ground Cables
- Wires (NYA & AWG)
- Data & Instrument Cables
- Solar Cables
- Special Cables



CABLES & WIRES

Description

Cable connection and installation products are used to connect cables and wires together. We offer the highest quality and most reliable cable for all types of applications as per our client's requirements.

Products:

- LV & MV Cables
- Ground Cables
- Wires (NYA & AWG)
- Data & Instrument Cables
- Special Cables



CABLE CONNECTION & INSTALLATION PRODUCTS

Description

Cable connection and installation products are used to connect cables and wires together. We offer the highest quality and most reliable cable for all types of applications as per our client's requirements.

Products:

- LV & MV Cable Lugs
- Cable Glands
- Joints & Terminations
- Wire Spring Nuts
- Cable Pulling Lubricant
- Cable Cleats
- Cable Ties



Long Life



Reliable Operation



1 Years Warranty



High Tolerance

LIGHTING

- LED lamps
Bulb | Tube | Spot | Garden | Par Lamp | Special Lamp
- High power Led Down Light
- Soft light LED Down Light
- Slim Panel Light
- LED Street Light
- LED Strip Light

LED BULBS

Features and Benefits

- No UV or infrared
- Mercury-free
- Lightweight housing
- Excellent heat dissipation for high-power operation
- Built-in-LED current control driver
- Constant light output
- Instant on, instant bright



LED TUBE & PL / 2G11 TUBE

Features and Benefits

- Long lifetime of over 30,000 hours
- High antistatic for LEDs
- More brightness
- Better optical design
- High light transmission
- Environment friendly
- No flickering & humming
- Recyclable



Instant ON



Zero UV Radiation



Excellent Color Rendering



No Mercury



Long Life



Energy Saving



2 Years Warranty on Lamps



Temperature resistance

LEDs are retrofit and have been designed to fit easily into the existing lighting system

| OUR PRODUCTS | TOOLS



PROFESSIONAL TOOLS

- Crimping Tools
- Hand Tools
- Measuring Tools
- Other required tools



HAND TOOLS

Features and Benefits

- Dous Tech deals with hand tools that are designed to withstand the toughest job site conditions and are engineered to deliver the same standard of excellence as our power tools. Our hand tools are conceived on the job site and built to exceed the expectations of all trades.
- Excellent after-sales service



CRIMPING TOOLS

Features and Benefits

- Available in Battery powered and Hydraulic for heavy-duty applications
- Unmatched reliability
- Ease of operation
- Allows Repeatability
- Heavy-duty construction
- Avoid micro cuts
- Lightweight



Long Life



2 Years Warranty on Lamps



Temperature resistance

OUR PRODUCTS TIRES



TIRES & BATTERIES

- Truck & Bus Tires (TBR)
- Off-Road Tires (OTR)
- Passenger Car Radial Tires (PCR)
- Car Batteries (All Types)



TRUCK & BUS TIRES (TBR)

Description

TBR tire is the short name for Truck and Bus Radial Tire, so we can see that TBR tires are mainly used for Truck and Bus vehicles, sometimes it known as TBR tires as commercial tires because TBR tires are used for commercial vehicles. Meanwhile, the TBR tire's structure is all steel wire, so the TBR tire has better loading performance.

TBR tires sizes mainly are:

6.50R16LT, 7.00R16LT, 7.50R16LT, 8.25R16LT, 9.00R20, 10.00R20, 11.00R20, 12.00R20, 11R22.5, 12R22.5, 13R22.5, 315/80R22.5, 12.00R24, 325/95R24, 295/80R22.5, 11R24.5, 12R24.5, 425/65R22.5, 445/65R22.5 etc.



OFF THE ROAD TIRES (OTR)

Description

OTR tire is the short name of Off the Road Tire, which OTR tire mainly used for the Giant truck vehicles in the mine area.

OTR tire sizes mainly include:

16.00R24, 16.00R25, 17.5R25, 18.00R33, 20.5R25, 23.5R25, 26.5R25, 29.5R25, 21.00R33, 21.00R35, 27.00R49, 30.00R51, 33.00R51, 36.00R51, 40.00R57, 35/65R33 etc.



Long Life



Reliable Operation



1 Years Warranty



High Tolerance

PASSENGER CAR RADIAL TYRES (PCR)

Description

PCR tires are the short name for Passenger Car Radial tires, so we can see that the type is mainly used for light and passenger vehicles, Mainly designed for high-speed driving conditions with safety and not compromising the comfortable ride quality.

PCR tires sizes mainly are:

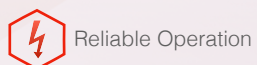
185/65R14, 195/70R15, 235/75R15, 215/60R16, 225/65R17, 225/45R18, 255/60R19, 275/55R20 etc.



CAR BATTERIES

Features and Benefits

- High Capacity in different sizes
- Maintenance-free (Dry), ACID (Wet), or lithium-ion types are available
- Longer lifespan
- Recycling
- Heavy-duty construction
- Avoid micro cuts



LOW CURRENT SYSTEMS

- Fire Alarm System
- Access Control System
- CCTV System
- Automation System
- Other System



LOW CURRENT SYSTEMS

DousTech Trading offers a range of medical equipment including:

1. Fire Alarm System:

- A fire alarm system is designed to detect and warn people of the presence of fire.
- It includes smoke detectors, heat detectors, fire alarms, and fire suppression systems.
- The system can be programmed to send alerts to a central monitoring station or directly to the fire department.

2. Access Control System:

- An access control system is used to restrict access to a specific area or building.
- It includes door locks, electronic keypads, biometric scanners, and security cameras.
- The system can be integrated with other security systems to provide a comprehensive security solution.

3. CCTV System:

- A CCTV system is used for surveillance and security purposes.
- It includes cameras, monitors, and recording devices.
- The system can be monitored remotely and can be integrated with other security systems.

4. Automation System:

- An automation system controls and manages various systems in a building.
- It includes lighting controls, HVAC controls, and energy management systems.
- The system can be programmed to automatically adjust systems based on time of day, occupancy, and other factors.

5. Other Systems:

- Other low-current systems can include audio-visual, intercom, and public address systems.
- These systems can be integrated with other low-current systems to provide a comprehensive solution.
- Different sizes and configurations of these systems can be offered based on the specific needs of a building or facility.



MEDICAL EQUIPMENT

- General Medical Devices
- Laboratory Equipment
- Personal Protection
- Medical Instruments
- Specialized Hospital Furniture



MEDICAL EQUIPMENT

Description

We offer only the highest quality products from leading brands. Trust us to provide you with the best equipment and services for peace of mind. Choose Abonemed for all of your healthcare needs.

Support:

Our team of qualified professionals is dedicated to delivering the best service possible. Rest assured that we will go above and beyond to meet your needs. Trust us to handle everything, so you can have peace of mind.

Products:

- General Medical Devices
- Laboratory Equipment
- Personal Protection Equipment
- Dental Equipment
- ENT Equipment
- Operation Theatre Room Equipment
- Radiology Equipment
- Ophthalmology Equipment
- Specialized Hospital Furniture
- Labor Room Equipment
- Physiotherapy & Rehabilitation Equipment
- CSSD Equipments



Long Life



Reliable Operation



1 Years Warranty



High Tolerance

PRODUCTS

WDousTech Trading offers a range of medical equipment including:

1. General Medical Devices:

- These include a range of equipment such as blood pressure monitors, thermometers, nebulizers, pulse oximeters, and more.
- They are used in various medical settings, including hospitals, clinics, and at-home care.

2. Laboratory Equipment:

- DousTech offers a range of laboratory equipment, including centrifuges, microscopes, spectrophotometers, and more.
- These are used in medical and research laboratories for various testing and analysis purposes.

3. Personal Protection:

- DousTech offers a range of personal protective equipment (PPE) such as face masks, gloves, protective suits, and more.
- These are essential for medical professionals and other personnel working in high-risk environments to protect themselves and prevent the spread of infection.

4. Medical Instruments:

- DousTech offers a range of medical instruments such as surgical instruments, dental instruments, and diagnostic instruments.
- These are used in medical procedures and examinations to diagnose and treat various conditions.

5. Specialized Hospital Furniture:

- DousTech offers a range of specialized hospital furniture such as hospital beds, medical carts, and surgical tables.
- These are designed to provide comfort and convenience for patients while ensuring the safety and efficiency of medical procedures.





| OUR STRATEGIC PARTNERS |





DousTech Trading LLC | www.dous-tech.com

 +971 6 548 2632  +971 54 322 5776  management@doustech.net

 P.O.Box 27721, Sharjah, United Arab Emirates